

# Swanson's Building

1006 North Hudson, Oklahoma City, OK 73102



## RETAIL / CREATIVE OFFICE SPACE NOW AVAILABLE

<b>Available Square Feet:</b>	8,920 SF
<b>Suite A</b>	3,077 SF
<b>Suite B</b>	1,342 SF
<b>Suite C</b>	1,550 SF
<b>Suite D</b>	1,248 SF
<b>Suite E</b>	1,703 SF
<b>Lease Rate:</b>	Negotiable
<b>Lot Size:</b>	0.39 Acres
<b>Building Size:</b>	14,632 SF
<b>Cross Streets:</b>	NW 9th & N Hudson

Formerly the Swanson's Tire Company, this project is in the heart of the growing Midtown neighborhood.

Enjoy a 5-minute walk to St. Anthony Medical Complex, OKC's central business district, OCU School of Law and downtown residences from this location. Project is also adjacent to an upcoming OKC Streetcar stop.

Barrios, a highly anticipated Mexican restaurant from the Good Egg Dining group, anchors the project. 3,077 square feet of Hudson-facing retail and four courtyard-facing retail/creative office spaces ranging from 1,248 square feet to 1,700 square feet remain.

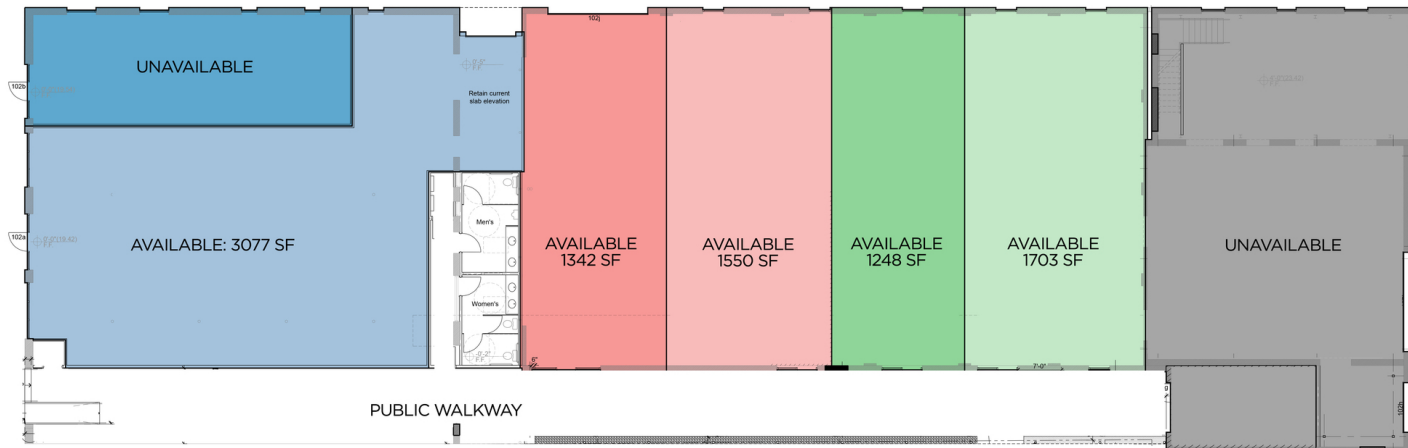
063016

FOR MORE INFORMATION, CONTACT

Allison Barta Bailey  
abailey@priceedwards.com  
405.239.1245  
210 Park Ave, Suite 1000  
Oklahoma City, OK 73102  
www.priceedwards.com

# Swanson's Building

1006 North Hudson, Oklahoma City, OK 73102



## DEMOGRAPHICS (per 2010 Census; 5 Miles Radius)

Total Population	214,377
Median Age	33.5
Median Age (Male)	32.9
Median Age (Female)	34.0
Total Households	85,242
# of Persons Per HH	2.5
Average HH Income	\$49,406
Average House Value	\$142,024